

Emergency Animal Disease Preparedness

FOR POULTRY SHOWS & AUCTIONS

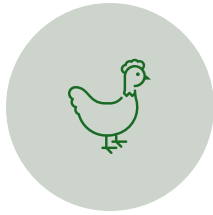
Dr Brigitte Pattinson



Contents



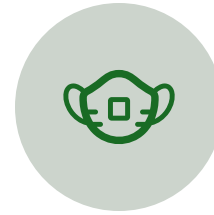
What is an EAD?



Biosecurity at an
event



EAD Action Plan



What equipment
is required?



Resources



Contacts

What is an Emergency Animal Disease (EAD)

Emergency Animal Disease

EAD definition: disease that are exotic to Australia, or endemic diseases which can cause significant outbreaks in Australia.

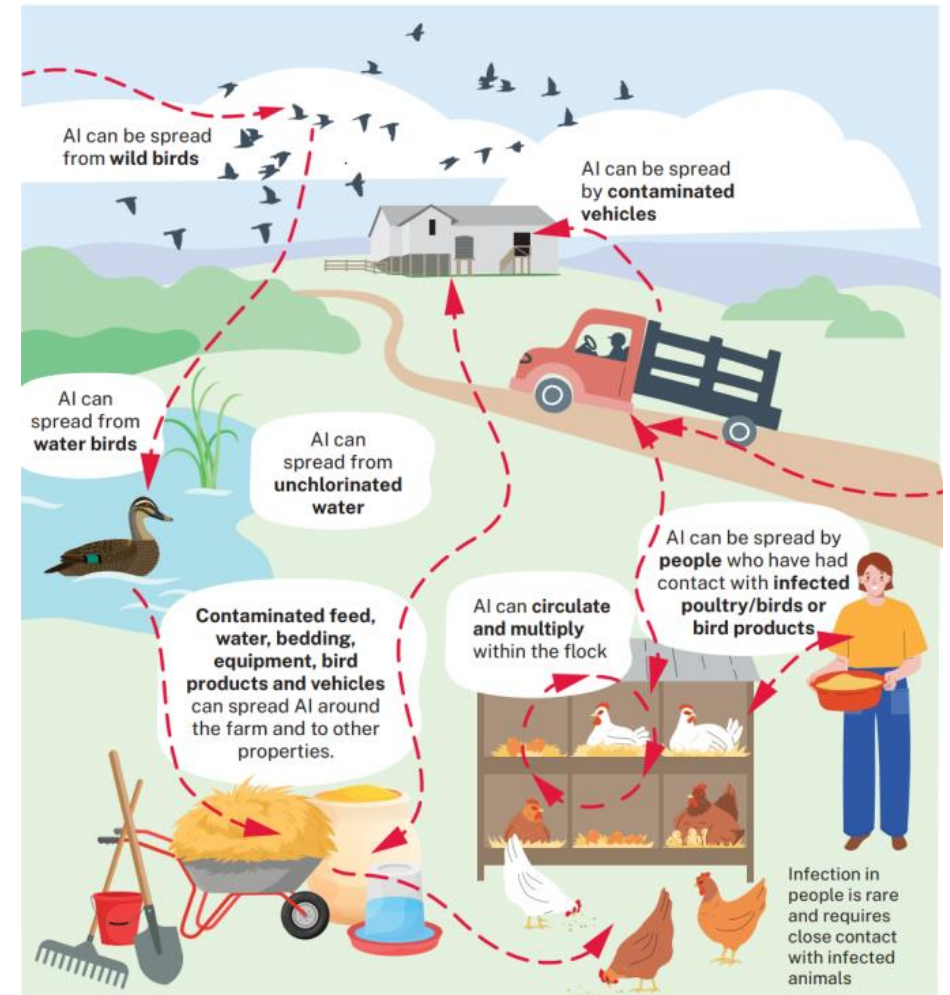
Examples include Avian Influenza and Newcastle Disease.

Clinical signs:

- High rate of death or sickness in birds.
- Drop in egg production.
- Rapid spread of disease through a flock.
- Respiratory signs - excessive nasal discharge or salivation.
- Neurological signs - tremors, circling or paralysis.
- Any unusual disease symptoms.
- Disease affects multiple species.

Avian Influenza

- LPAI and HPAI
 - H7N3 & H7N9 2024
 - H7N8 2025
- Zoonotic
- Clinical signs:
 - Sudden death
 - Blue wattle/comb, face swelling
 - Respiratory disease, diarrhoea
 - Reduced egg production, feed and water intake
 - Neurological signs



NSW DPI

Newcastle Disease

- Zoonotic
- Transmission:
 - Fecal/oral, inhalation
 - Fomites (virus survives in fecal material)
 - Vertical
- Clinical signs:
 - Sudden death
 - Conjunctivitis
 - Diarrhoea
 - Neurological and respiratory signs
- Most recent occurrence was in NSW in 2002



<https://www.msschippers.com/advice/the-5-steps-to-prevent-newcastle-disease-in-chickens>

Biosecurity at a Poultry Event

Biosecurity at Poultry Events

DAFF Poultry Show and Exhibitors Plan

Simple steps for everyday Biosecurity:

- Traceability
- Set up foot bath/hand sanitiser
- Local vet contact
- Emergency contacts available
- Clean cages
- Inform exhibitors
- Isolation/sick pens



* Ag Events Biosecurity, DAFF Biosecurity Plan, Traceability template

General Biosecurity set up for event day

- Foot bath set up
 - Tools to remove mud/manure
 - Foot bath with decontaminant
 - Changed often
 - e.g. Farm disinfectant
 - Follow label
- Hand wash Station
- Visitor log in/record



EAD Action Plan

EAD Action Plan for Poultry Shows/Auctions

Event Staff notified

Collect information on suspect case

Contact Private Vet or Authorities

Vet examination

Isolate bird

Set up perimeter

Communication

Further information to collect

AgVic Staff arrive

What Equipment is Required?

What Equipment is Required?



Exiting 'Dirty' side – red zone

- Remove all organic material
- Scrub boots in detergent
 - E.g.
 - Laundry detergent
 - Dishwash liquid
- Wash any equipment in tub to be brought to 'clean' side



Exiting 'Dirty' Side – yellow zone

- Scrub boots in decontaminant tub
- Decontaminant
 - e.g.
 - Farm disinfectant – following on label instructions
- Wash any equipment in tub to come onto 'clean' side
- Remain in tub and remove any PPE
 - 1st layer of gloves, mask, goggles, roll down overalls
 - Place in rubbish bag
- Step out of overalls and boots onto clean side



Exiting 'Dirty' side – green zone

- Remove final pair of gloves and place in rubbish, sanitise hands
- Step in clean shoes
- Allow appropriate contact time for all equipment
- Make detailed notes



Resources

Resources for Poultry Events

EAD Information Pack:

- Content List
- EAD Action Plan
 - Appendices:
 1. Setting up entry/exit
 2. Chemical selection
 3. How AI spreads
 4. Information required from Poultry Auctions/Shows
 5. Traceability template
- Entry/Exit equipment list
- Agricultural events biosecurity
- Come clean, go clean when attending events

Resources for Poultry Events

Appendix 4 - Information required from Poultry Auctions, Shows

In the case of a suspect EAD at an event the following information is worth gathering to best assist authorities understand and control the disease.

Information includes:

- Event site information
- Staff in attendance
- Suspect case information
- Movement of livestock/vehicles/products from event
- Movement of livestock/vehicles/products to event

Resources for Poultry Events

Appendix 5 - Traceability template

- Traceability provides information throughout an animal's life
- During an EAD this information is pivotal to limit the impact and reduce the spread

Information to gather:

- Event info

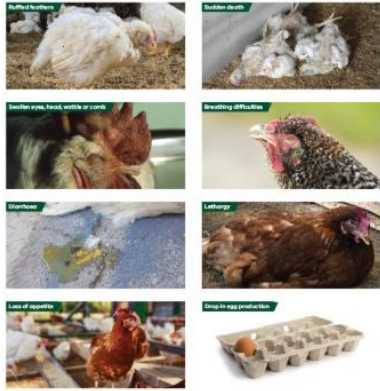
<i>Cage Number</i>			
Bird species:	Breed, age, sex:	Number:	Fit for sale?
<i>Source Information</i>			
Name	Address	Phone	PIC
<i>Buyer Information</i>			
Name	Address	Phone	PIC

Resources for Poultry Events

- Come clean, stay clean, go clean when attending events
- Factsheet for exhibitors
- Information they should consider when:
 - Planning to attended
 - At the event
 - Leaving the event
- Also steps for cleaning boots



COMMON SIGNS OF ILLNESS IN POULTRY



Under the Prevention of Cruelty to Animals Act 1986, it is an offence to sell, offer for sale, purchase, drive or convey an animal that appears to be unfit (because of weakness, emaciation, injury or disease). Report any signs of disease to your vet or the Emergency Animal Disease hotline.

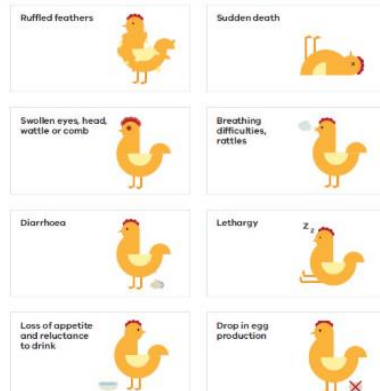
Learn more:



EMERGENCY ANIMAL
DISEASE HOTLINE
1800 675 888

AGRICULTURE VICTORIA

COMMON SIGNS OF ILLNESS IN POULTRY



Under the Prevention of Cruelty to Animals Act 1986, it is an offence to sell, offer for sale, purchase, drive or convey an animal that appears to be unfit (because of weakness, emaciation, injury or disease). Report any signs of disease to your vet or the Emergency Animal Disease hotline.

Learn more:



EMERGENCY ANIMAL
DISEASE HOTLINE
1800 675 888

AGRICULTURE VICTORIA

POULTRY WELFARE | A CRUELTY OFFENCE



Report any signs of disease to your vet or the Emergency Animal Disease hotline. If you have any other enquiries, including concerns regarding animal welfare, please contact the Agriculture Victoria Customer Service Centre on 136 186.

Learn more:



EMERGENCY ANIMAL
DISEASE HOTLINE
1800 675 888

AGRICULTURE VICTORIA

1

CLEAN



Use a strong bristled brush to remove all visible debris.

2

WASH



Wash/scrub shoes in a container of soapy water.

3

DISINFECT



Wash shoes in a second footbath containing disinfectant.

4

SIGN IN



Sign the visitor log.

agriculture.vic.gov.au/biosecurity

AGRICULTURE VICTORIA

ARE YOUR POULTRY FIT TO LOAD?

Before poultry are loaded, ensure that you complete this checklist.

Remember that it is your responsibility to ensure poultry are fit to load and fit for the intended journey before they are loaded.

The bird,

- ☐ can walk on its own by bearing weight on both legs
- ☐ is free from visible signs of severe injury or distress or conditions likely to further compromise its welfare during transport e.g. broken legs, injuries to head or swollen eyes
- ☐ is strong enough to make the journey (e.g. not dehydrated or emaciated)
- ☐ has had access to water within the past 24 hours
- ☐ if all boxes are ticked, the bird is fit to load

If one or more boxes are unticked, the bird is **NOT** fit to load.

- You therefore need to either:
- ☐ provide appropriate treatment for poultry and transport when recovered and is fit to load
 - ☐ humanely destroy the animal
 - ☐ consult a veterinarian and then transport only under veterinary supervision

Under the Prevention of Cruelty to Animals Act 1986, it is an offence to sell, offer for sale, purchase, drive or convey an animal that appears to be unfit (because of weakness, emaciation, injury or disease).

Containers should be a suitable size and height for the bird, below is a table showing the maximum number of birds and minimum space allowances for bird types:

Bird type	Maximum per crate 2000 cm ² e.g. 60 cm width x 10 cm length	Minimum height of crate
Chickens, ducks and geese below 1.5 kg	10	25 cm
Mature chickens, ducks and geese below 3 kg	Approximately 7 depending on body weight	25 cm
Turkeys, ducks and geese above 3 kg	Approximately 5 depending on body weight	32 cm
Adult pigeons or squabs	12	21 cm

Birds must not be carried, held or transported in the boot of a sedan car.

AGRICULTURE VICTORIA

VISIBLE SIGNS OF INJURY OR CONDITIONS THAT MAY COMPROMISE WELFARE



Report any signs of disease to your vet or the Emergency Animal Disease hotline. If you have any other enquiries, including concerns regarding animal welfare, please contact the Agriculture Victoria Customer Service Centre on 136 186.

EMERGENCY ANIMAL
DISEASE HOTLINE
1800 675 888

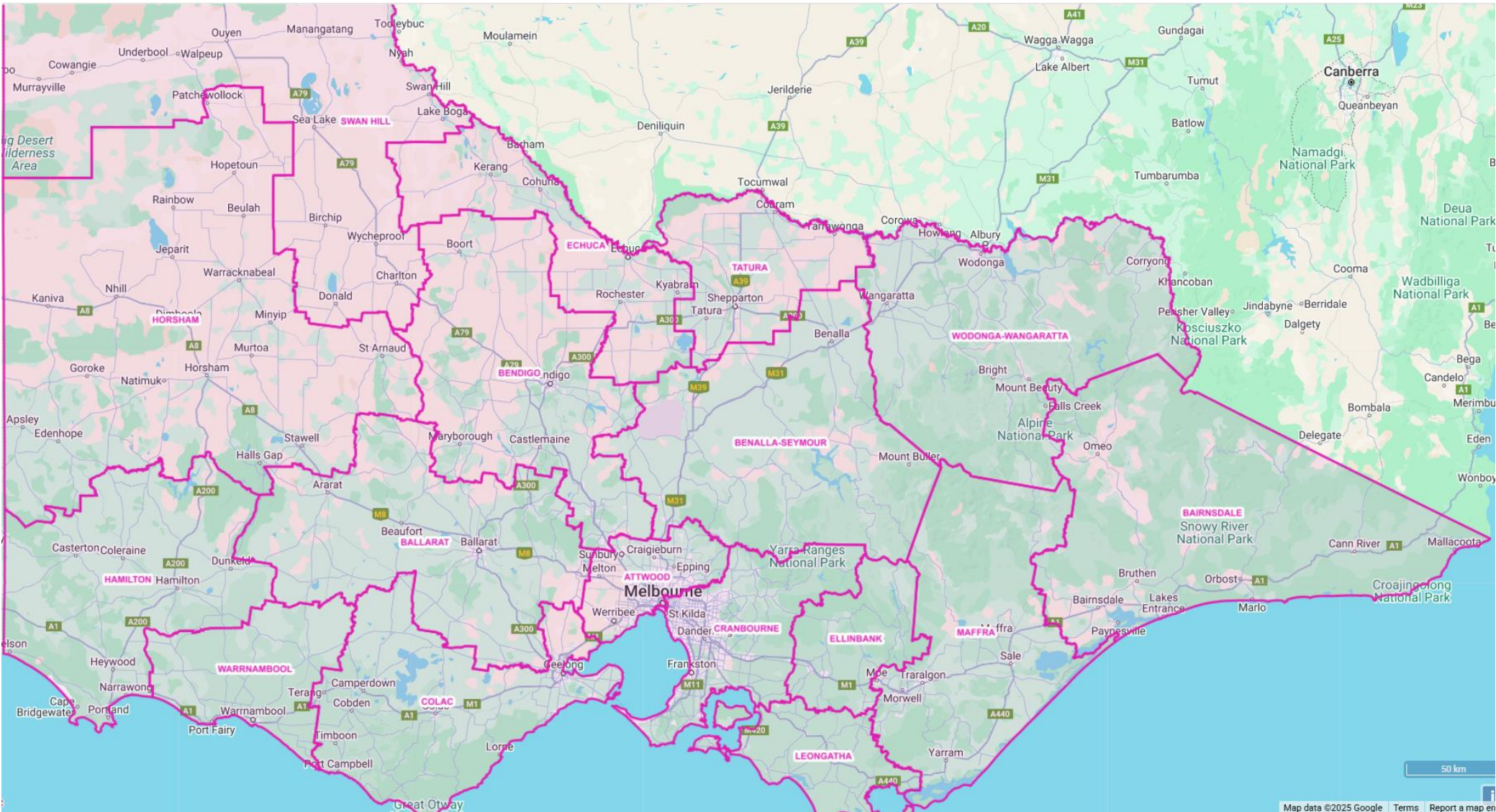
Learn more:



OFFICIAL

Contacts

Agriculture Victoria Contacts



Who to call?



Private Vet



EAD Hotline
1800 675 888



Local AgVic team